

ADDITIONAL
INFORMATION
ENTRY 2022

Wallington
High School for Girls
HEIRS OF THE PAST, MAKERS OF THE FUTURE



INFORMATION

ABOUT WALLINGTON HIGH SCHOOL FOR GIRLS

Wallington High School for Girls (WHSG) is a selective academy for approximately 1400 girls aged between 11 and 18. The school first opened in 1888 and we celebrated our 125 year anniversary during 2013. The school moved to its present site in 1965. The school is heavily oversubscribed and we have over 1700 applications each year for the 210 places in Year 7, and many external students also apply for our sixth form. We are a multicultural community with an increasing percentage of minority ethnic groups. Over 47 different first languages are spoken and this brings a rich diversity to our school.

Our students achieve at the highest level academically. In 2020, 86.4% of our GCSE entries were awarded a grade 7 or better with just a under a quarter of all grades awarded a grade 9. The academic progress made by our students from joining the school to GCSE, consistently places Wallington in the top 1% of all schools nationally.

At A level, 53% of our entries were awarded an A*/A grade, 24.1% of those at A*. The vast majority of our students move from WHSG into higher education including Oxford and Cambridge and with a significant and increasing number of students gaining places at Russell Group universities or medical schools. Our students are highly able, motivated and a delight to teach. Students enjoy positive and co-operative relationships with staff and it is very rare if an external visitor to the school does not comment on the high calibre of the students.

We have a thriving sixth form with just over two hundred and twenty girls in each of Year 12 and 13. Our intake has expanded in the last few years and recently we opened a new Library and Study Centre which includes a private study area for Sixth Form. This was followed by the opening of two new additional Science labs last year.

We currently run a three year Key Stage 3. Our Key Stage 3 students study two modern foreign languages alongside the other national curriculum subjects. At Key Stage 4, students study for ten GCSEs, which includes a Language option and a Humanities option. The vast majority of our students continue into the Sixth Form at WHSG where they can choose from a wide range of A level subjects. Many students can opt to study for the Extended Project Qualification (EPQ) in Year 13.

Students enjoy a comprehensive programme of PSHCE and Citizenship throughout the school and we encourage our students to be active and responsible citizens through a variety of charitable and community activities. The school also operates a very successful House system which encourages integration between the year groups and provides leadership opportunities for students. Similarly, a strong Head Girl and Senior Prefect team and School Council ensure that the student body has a voice within the school and that younger students are supported.

Outside of the classroom we are fortunate in having staff who provide a wide range of extra-curricular opportunities for students and this is central to our ethos. Sport plays an important part in the life of the school and we are successful at national and regional level in a number of sports including table tennis, athletics and cricket. We have, for example, won the borough Athletics Championships for the last six years. Similarly, we have many opportunities for students to showcase and develop their talents in Music, Drama and the Arts. Alongside this we have a highly popular Duke of Edinburgh programme as well as our Combined Cadet Force, shared with a local boys' Grammar School. Staff also organise a number of visits related to both the curriculum and beyond, which enrich student life at the school.

WHSG has a very supportive Parents and Friends Association (PFA) who play a vital role in the life of the school. We also enjoy supportive and committed parents who work alongside the school to improve outcomes for their daughters.

Staff in the school are our most valued asset. We employ highly qualified teaching staff all of whom are subject specialists. Working alongside the teaching staff, we also have a skilled support staff team who perform vital roles in the school. We value staff development across the school and invest time and resources to ensure our staff continue to expand and enhance their skills and knowledge. Staff turnover is low and this provides essential stability for students and parents.

VISION AND AIMS

‘HEIRS OF THE PAST. MAKERS OF THE FUTURE’

To provide an outstanding education that aims to develop curious, courageous and compassionate individuals who possess first class qualifications, a strong sense of integrity, responsibility and self-belief as well as the resilience to take risks and the skills to lead others in shaping the future.

In order to achieve this, our school aims are:

- To challenge and inspire students to have the highest aspirations and be committed to making the very best of their abilities, ensuring that they are supported to do so through highly effective individual care, guidance and encouragement
- To encourage students to be deep thinkers, knowledgeable scholars and articulate communicators who are intellectually curious and have a passion for learning
- To provide high quality teaching and learning that enables students to attain the highest levels of academic achievement and be successful at the best universities
- To build within our students a strong sense of self-belief, dignity, service and social responsibility, equipping them with the ability to lead others and to have the desire to change society for the better
- To be committed to the continuous development of our staff expertise and the promotion of their wellbeing
- To provide a wide range of opportunities, including enrichment and co-curricular opportunities, for students to nurture and develop their talents and creativity as well as further their social, moral, spiritual and cultural understanding
- To use the motivational power of praise and celebration balanced with good order and self-discipline to build positive relationships
- To be an innovative and forward looking school that combines the best of the new with the best traditions of British education

OUR CORE VALUES ARE CURIOSITY, COURAGE AND COMPASSION

THE CURRICULUM AT WHSG

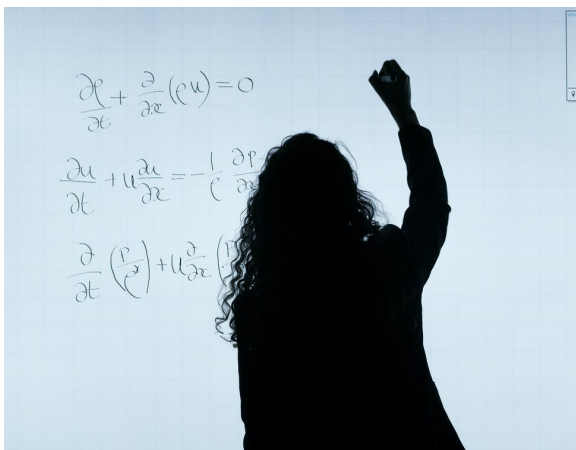
KS3

In Year 7 – 9 students study the following subjects:-

English	Design & Technology
Mathematics*	Music
Science	Art
Two modern foreign languages **	Drama
Geography	PE
History	Religious Studies
Computing	PSHCE

*Arranged in sets by ability from Year 8

** From French, German or Spanish



KS4

All students in Years 10 and 11 will study 10 GCSEs including the following compulsory subjects:-

English Language	A Modern Foreign Language
English Literature	A Humanity (Geography, History or Religious Studies)
Mathematics	Theology and Philosophy (not examined)
Biology	PSHCE (not examined)
Chemistry	PE (General – not examined)
Physics	

With two options from:

Another Modern Foreign Language	Geography
Art	History
Business Studies	Media Studies
Dance D & T – Product Design Drama	Music Psychology Physical Education
Food & Nutrition	

We currently run twilight courses for students wanting to study for GCSEs in Latin and Photography.

KS5

Wallington High School for Girls is proud of its wide range of 26 A level subject options.

The subjects available at A level are:

Art	Government & Politics
Biology	History
Chemistry	Mathematics
Classical Civilisations	Mathematics – Further
Computer Science	Music
DT - Product Design with Graphics	Film Studies
DT - Product Design with Resistant Materials	Philosophy
Drama	Physics
Economics	Physical Education
English Literature	Psychology
French	Sociology
German	Spanish
Geography	

Students also have the opportunity to study for the Extended Project Qualification (EPQ).

Students in the Sixth Form also benefit from an extensive tutorial programme that develops skills to help prepare for life beyond school.

PASTORAL

The support, care and guidance of students at WHSG is a key priority at the school; in particular ensuring their emotional wellbeing.

In order to provide the highest standards of care, guidance and support each student is allocated to a form with a dedicated form tutor who plays an important role in supporting students in their care and provides a vital link for parents. This tutor will stay with the form group until they complete year 11. There is time at the start of every day for the tutor to meet the form during the tutor period and a planned programme of activities around settling in, friendships, resilience and expectations is delivered in this time. The form tutor will also deliver our PSHCE curriculum which has elements of safeguarding and emotional wellbeing education for all year groups.

Each year group has a Head of Year whose role is to manage the tutor team for his/her year group, support the students throughout their time here and monitor student progress to ensure that they are able to achieve in line with expectations or exceed them.

The school's senior leadership team also take responsibility for the pastoral care of students with an Assistant Head having responsibility for years 7-11. This provides another important link for parents.

Each week students participate in a Senior Team school assembly and a year group assembly. Alongside this they have the programme of tutorial activities that help their personal development as individuals and as member of their form.

The House system is a key part of the school. Each form group represents one of our Houses which are (Athena, Bronte, Curie, Johnson, Pankhurst, Seacole and Sharman). The Houses are led by a team of student leaders from Year 10/11 who set an excellent example to students across the school. The House system provides opportunities for student competitions, support and the chance for different year groups to work together. It makes a very real contribution to the sense of unity within the school.



Students are encouraged to support and guide others through buddy systems for Year 7s, the school council, form prefects, wellbeing mentors and through a strong house leader and senior prefect team. There are many opportunities for students to take on leadership roles through their form, house or the prefect system.

To further support the pastoral care of students we employ a school counsellor, an ELSA (Emotional Literacy Support Assistant) and the Borough Nursing Service and buy-in services such as the Educational Psychologist, Clinical Psychologist and Sensory Impairment Service.

Students and parents are well supported through the key transition points in the school starting with Year 7 induction day through to the KS4 option process, the move into the sixth form and, finally, university applications. At the start of each year, Parent Information Evenings are held so that parents are informed about what to expect from the year ahead.

We aim to make praise and reward central to life at the school. Our student achievements both in terms of academic achievement and effort in the classroom and through extra-curricular / enrichment opportunities are widely recognised through our annual 'Well Done Wallington' celebration event, Sports and Arts Awards, Jack Petchey awards, house prizes, attendance awards, star of the term postcards, celebration assemblies and newsletters. We take great pride in celebrating the many accomplishments of our students both in and out of school.

A LEVEL RESULTS 2019/2020

Subject	Entries	A*	A	B	C	D	E	U
Art & Design	10	2	5	3	0	0	0	0
Biology	119	18	29	24	32	14	2	0
Chemistry	115	15	31	25	25	13	6	0
Classical Civilisation	6	0	6	0	0	0	0	0
Computer Science	7	1	4	1	0	1	0	0
D&T Product Design	10	0	2	6	2	0	0	0
Drama	6	3	3	0	0	0	0	0
Economics	19	6	4	5	4	0	0	0
Economics & Business	14	2	4	5	2	1	0	0
English Literature	31	11	8	11	1	0	0	0
French	17	5	7	4	1	0	0	0
Geography	9	3	2	3	1	0	0	0
German	8	2	5	0	1	0	0	0
Government & Politics	10	3	4	2	1	0	0	0
History	15	5	5	4	1	0	0	0
Mathematics	150	40	44	38	23	4	1	0
Mathematics Further	11	5	5	1	0	0	0	0
Media Studies	4	2	1	0	1	0	0	0
Music	2	1	1	0	0	0	0	0
PE	6	1	2	3	0	0	0	0
Philosophy & Ethics	27	11	8	7	1	0	0	0
Photography	3	1	1	1	0	0	0	0
Physics	41	11	9	12	8	1	0	0
Psychology	35	15	4	12	4	0	0	0
Sociology	10	1	2	5	2	0	0	0
Spanish	13	4	6	2	1	0	0	0
Totals	698	168	202	174	111	34	9	0
% per Grade		24.1%	28.9%	24.9%	15.9%	4.9%	1.3%	0.0%
% Cumulative		24.1%	53.0%	77.9%	93.8%	98.7%	100%	100%



GCSE RESULTS 2019/2020

Subject	Entries	9	8	7	6	5	4	3	U
Art and Design	30	7	11	10	2	0	0	0	0
Biology	211	89	62	38	20	2	0	0	0
Business Studies	66	13	15	16	17	5	0	0	0
Chemistry	211	76	86	37	7	3	2	0	0
Computer Science	42	7	11	12	9	2	1	0	0
D&T Food Technology	23	13	9	1	0	0	0	0	0
D&T Product Design	33	14	11	5	3	0	0	0	0
Dance	11	4	3	4	0	0	0	0	0
Drama	20	6	5	9	0	0	0	0	0
English Language	211	45	58	46	51	11	0	0	0
English Literature	211	56	76	49	26	4	0	0	0
French	83	33	23	21	6	0	0	0	0
Geography	91	31	26	20	12	2	0	0	0
German	70	17	16	23	13	1	0	0	0
History	56	14	15	19	5	3	0	0	0
Latin	14	7	4	3	0	0	0	0	0
Maths (General)	211	88	80	37	6	0	0	0	0
Media Studies	24	10	11	3	0	0	0	0	0
Music	17	6	5	4	2	0	0	0	0
PE	19	8	3	6	2	0	0	0	0
Philosophy	82	39	20	12	9	2	0	0	0
Photography	6	2	3	1	0	0	0	0	0
Physics	211	82	66	36	21	6	0	0	0
Psychology	107	32	27	23	20	1	1	2	0
Spanish	62	19	20	14	9	0	0	0	0
Totals	2122	718	666	449	240	42	4	2	0
% per Grade		33.8%	31.4%	21.2%	11.3%	2.0%	0.2%	0.1%	0.0%
% Cumulative		33.8%	65.2%	86.4%	97.7%	99.7%	99.9%	100%	100%

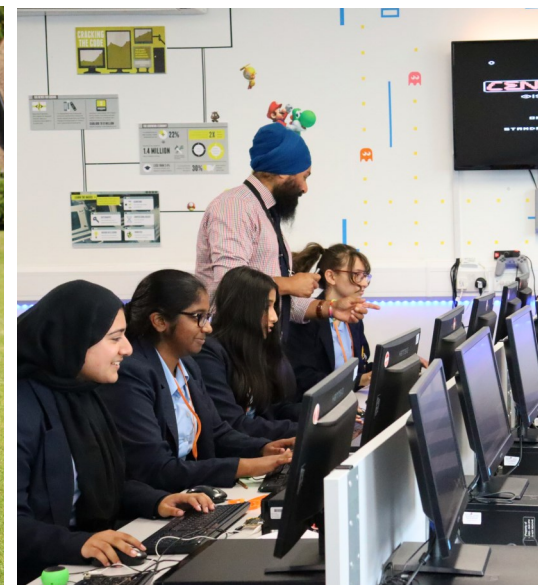


FACILITIES

WHSG is fortunate in having excellent facilities that enable us to deliver a high quality learning experience for all students. We are particularly proud of our new Library and Study Centre (opened last year) which includes a large study area dedicated to Sixth Form students to allow them to make best use of their study time. We recently opened two new additional Science labs to further improve our Science provision.

The school enjoys well equipped science labs, dedicated technology and music blocks and IT suites allowing us to give students access to modern computers. We have a drama studio and well-resourced art rooms.

Our sports facilities are first class and match our success in this area. A sports hall was built in 2011 which has allowed us to further develop the sporting opportunities for our students. New tennis/netball courts were built in 2014 and alongside these we have a large school field.



EXTRA-CURRICULAR ACTIVITIES

We are proud of the wide range of extra-curricular / enrichment offered to all our students. We aim to involve everyone. So, as well as being delighted with our sporting achievements at National, County and Borough level, we also provide a wide range of sports activities that everyone can participate in, regardless of their ability. Similarly, our Music and Drama activities allow our highly talented students to develop, whilst also providing opportunities for everyone in the school. We have a school production every year which incorporates music, drama and dance. This year it was the hugely successful 'Legally Blonde'. We also enjoy a wide range of musical events including concerts and recitals.

This year we have seen our debating teams thrive with success in Mock Trials, The London Debate Challenge and the Jack Petchey Speak Out Challenge. We run the Duke of Edinburgh Scheme in school and this has proved very popular with students. We have also set up a partnership with Wilson's School Combined Cadet Force (CCF) and our Year 9 and above students have enjoyed many successes as part of their contingent.



An outline of some of the extra-curricular opportunities on offer at the school is detailed below.

Sport / Dance	
Netball	Athletics
Hockey	Rounders
Football	Gym
Tennis	Dance
Badminton	Trampolining
Cricket	Korfball
Rugby	Table tennis

Music / Drama	
Junior Choir	Peripatetic Lessons
Glee Club (Junior & Senior)	School Production
Junior Orchestra	Drama Club
Senior Orchestra	Lamda exams
Chamber Choir	Bollywood Dance
Gospel Choir	
Flute Choir	

In addition, we offer a wide range of enrichment activities that run throughout the year, including dedicated days in the Autumn, Spring and Summer terms where the timetable is collapsed to allow all students to take part. Over the last few years, enrichment activities have included:-

Activities	Visits
Maths Entrepreneurship Challenge	PE Activity Day
Team building exercises	Weald & Downland museum
Speak Out Challenge	Geography Field visits to Swanage & the River Darent
Engineering Education Scheme	Language visits to Spain, Germany and France
Foreign Language Plays	Science Museum
Careers Evening	Chatham Historic Dockyards
World Book Day	Art Galleries
Philosophy, Politics and Economics Day	Theatre visits
Forensic Science Day	Guildford Spectrum
Work Experience	Imperial War Museum
Take Your Daughter to Work Day	Ski visit
Debating Day	New York visit
TECHcamp activity Day	V & A museum
New Sports Taster Day	Physics visit to Cern
International Women's Event	Performing Arts visit to Italy
Independent Living Day	Visit to World War Battlefields
Higher Education Event	World Challenge to Morocco & Mozambique

ADDITIONAL INFORMATION FOR PARENTS/CARERS

UNIFORM

Students in Years 7-11 are proud to wear the school uniform comprising of a blazer, kilt, blouse and jumper. We also have a PE uniform.

Our sixth form students follow a smart dress code reflecting the high standard set across the rest of the school.

TIMING OF THE SCHOOL DAY

Please note that the school operates a two-week timetable.

From 7.50	Students may enter the school and can go to the Canteen or to Form Rooms. Food is available in the Canteen from 7.50am.
8.20	Full-time Staff in school
8.25	Registration
8.30	Assembly or Tutor time
8.45	Lesson 1
9.45	Lesson 2
10.45	MORNING BREAK
11.05	Lesson 3
12.05	Lesson 4
13.05	LUNCH
13.50	Lesson 5
14.50	End of School Day
14.50 - 15.50	Supervised extra-curricular activities may be available. Library is open for private study – Mondays to Fridays. For health and safety reasons, students must leave the school premises at 14.50 unless involved in one of the above.

SCHOOL WEBSITE

Our school website www.wallingtongirls.org.uk has more information on the school that may be of interest including;

- Policies – including the School Admissions Policy
- The last OFSTED inspection reports
- Links to the Department of Education performance tables and data dashboard
- Our weekly newsletter- The Wallington Week, to help gain further insight into the school
- Gallery page – photographic evidence of school events
- Course descriptors for all subjects taught at WHSG



GIRLS' LEARNING TRUST

Wallington is part of the Girls' Learning Trust.

The Trust was formed in September 2015 and initially consisted of two schools: Nonsuch High School for Girls and Wallington High School for Girls. In April 2018, Carshalton High School for Girls joined and further strengthened our Trust.

The aims of the Girls' Learning Trust are to deliver a first class education for girls (your daughters) ensuring that they realise their full potential and leave the Trust well prepared for their future. With around 4000 students and a highly effective operating model, GLT gives member schools the financial strength to drive school improvement and provides increased opportunities for students and staff across the trust.

We believe that by operating and collaborating as a multi academy trust of 3 schools rather than as standalone academies, we can ensure that your daughter receives the very best education possible.

The aims of GLT are achieved through:

- Delivering excellent standards of teaching and learning consistently across the Trust based on the setting of high expectations for all and an evaluative approach to improving performance that secures strong outcomes for all our students.
- Developing strong collaboration across the Trust ensuring each school is a giver and receiver of support where needed.

- Ensuring effective professional development and career progression opportunities across the Trust in order to recruit and retain excellent staff.
- Delivering effective pastoral provision to all our students ensuring they are supported, developed and well cared for during their time in the Trust.
- Developing a strong understanding of how best girls learn, develop and thrive and using this to underpin our approach to education across the Trust.
- Promoting and developing high aspirations for our young women allowing them to become the successful female leaders of the future.
- Creating an exciting, challenging and creative curriculum across the Trust, both inside and outside of the classroom, to allow all students to realise their full potential.

- Securing a financially viable Trust through strategic financial management and by working collaboratively to secure financial efficiencies.
- Communicating effectively with and valuing all of our stakeholders realising the important role they play in the Trust.

HOW ARE THE SCHOOLS GOVERNED?

The CEO of the Trust (Jennifer Smith), along with the

Trust Board, is accountable and responsible for the strategic direction and outcomes of both schools within the Trust. The Trust Board sets key performance indicators (KPIs) across the Trust to allow the strategic vision to be monitored and reviewed. The CEO is also the Accounting Officer for the Trust and retains legal responsibility for all the schools. There is also a Director of Finance and Operations for the Trust (Helen Latham), who leads on finance and other business management functions across both schools.

The CEO supports challenges and leads all the schools in the Trust. She is accountable for the delivery of an excellent standard of education across the GLT, securing strong student outcomes, setting the ethos and vision throughout and embedding effective collaboration and efficiencies across the schools.

Free from some of the strategic, financial and operational responsibilities of a standalone role, the primary focus of the school Headteacher role within the GLT structure is to provide highly effective leadership of the teaching and learning within their school alongside day to day management. The school Headteachers are accountable for securing strong student outcomes and the delivery of an excellent standard of education for all students in their school. The Headteachers report to, and are supported by,



ADMISSIONS INFORMATION

KEY DATES AND WHAT DO I NEED TO DO?

We participate, along with a group of five other schools, in a Selective Eligibility Test (SET). The five other schools involved are Greenshaw High School, Nonsuch High School for Girls, Sutton Grammar School, Wallington County Grammar School and Wilson's School. If your daughter passes the SET, she will be invited to sit the joint Nonsuch & Wallington Second Stage Entrance Examination (NWSSEE). It is not possible to apply to Wallington High School for Girls (WHSG) without having taken and passed the Entrance Tests first.

The following is a quick guide to the admissions process for admission to Year 7 in September 2022, together with the key dates you need to be aware of.

Please consult our website to view our current Admissions Policy and frequently asked questions <http://www.wallingtongirls.sutton.sch.uk/Admissions>

1 May 2021	Registration Registration opens for joint Selective Eligibility Test (SET)	Online registration to sit the joint Selective Eligibility Test opens. Registration can be completed via the website of any of the participating schools.
Friday 18 June 2021	Deadline date for submission of requests for special adjustments for candidates with SEN and for supporting evidence	See further guidance in the registration system
Midnight, Friday 13 August 2021	Closing date for registration for joint Selective Eligibility Test <u>No applications will be accepted after this date</u>	Complete your application online via our website www.wallingtongirls.org.uk or via the website of any of the six participating schools. You will then be sent an automatic email, to the address supplied, confirming details of your registration. Approximately 1 week before the SET, you will receive an email inviting your daughter to sit the test. You will be notified of the test centre your daughter will attend along with other details needed to sit the test. This test centre has no bearing on which of the schools you may be interested in; it is purely a test location. No applications will be accepted after midnight on 13 August 2021.
Tuesday 14 September 2021	Sit the joint Selective Eligibility Test Please note a reserve test will be arranged only for those who are ill on the day (on production of a medical certificate dated 14 September 2021) or having to self-isolate.	The test consists of two multiple choice papers; a Mathematics paper and an English paper. The papers take between 40 and 50 minutes each. The tests do not include verbal reasoning or non-verbal reasoning. Candidates will need to record their answers on a separate answer sheet. There are no specimen papers available but some sample questions will be on our website in due course. The content of the Mathematics and English tests is broadly based on the content of the Key Stage 2 curriculum.

ADMISSIONS INFORMATION

KEY DATES AND WHAT DO I NEED TO DO?

Tuesday 21 September 2021	SET Results Receive an email with the outcome of the joint Selective Eligibility Test	You will receive an email telling you the outcome of the Selective Eligibility Test. If your daughter passes the test she will be invited, by email, to sit the joint Nonsuch & Wallington Second Stage Entrance Exam.
Saturday 25 September 2021	Joint Nonsuch & Wallington Second Stage Entrance Exam (NWSSEE)	You will receive an invitation, by email, for your daughter to sit this test The test will consist of two papers (each will last between 40 and 50 minutes) a Mathematics paper and an English paper. There will be no verbal reasoning test. These tests will not be multiple-choice. Further information regarding the Second Stage Entrance Exam (including sample questions) can be found on our website.
Mid October 2021	Outcome of the Second Stage Entrance Exam	You will receive an email with the outcome of the Second Stage Entrance Exam before the closing date of the CAF. If your daughter has passed the test she will be eligible to be considered for a place at WHSG. Please note that passing the test is no guarantee of gaining a place at WHSG.
Before 31 October 2021	Submit your Common Application Form (CAF) The CAF is provided by your home Local Authority (LA) when your child is in Year 6 and you use it to apply to any school regardless of the LA in which the school is located. This form should be returned to your home LA. It can also be completed online via the following link: https://www.eadmissions.org.uk	The closing date for submission of the CAF is 31 October 2021. If you wish to apply for a place at WHSG you must name the school on the CAF. In order to make a valid application to WHSG: your daughter must have sat and passed the joint Selective Eligibility Test; your daughter must have sat and passed the Second Stage Entrance Exam; you must name WHSG on your home LA's CAF in your true order of preference ; it is very important that you put the schools in your true order of preference . If you name another school as a higher preference on the CAF and your daughter meets that school's criteria, she would be offered a place at that higher preference school and your preference for WHSG would be discarded If your daughter has not passed the joint Selective Eligibility Test or the Second Stage Entrance Exam then she is not eligible for a place at WHSG. If you think you may want to submit an appeal after National Offer Day (1 March 2022), you must name the school on your CAF.
1 March 2022	Receive an offer of a school place from your LA	On National Offer Day in March, offers of places will be sent by home LAs. If your daughter is offered a place at Wallington, you will receive a separate communication from us during the week commencing 1 March 2022.

WHSG APPLICATION PROCESS FOR YEAR 7 ADMISSION IN SEPTEMBER 2022

